



NIH Loan Repayment Programs (LRPs) An Overview

Division of Loan Repayment
Office of Extramural Programs/Office of Extramural Research
Office of the Director/National Institutes of Health



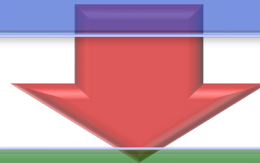
NIH National Institutes of Health
Office of Extramural Research

About the LRPs

NIH Loan Repayment Programs (LRPs) represent a **vital component** of our nation's efforts to keep health professionals in research careers

Here's how it works:

YOU: Commit to perform research for 2 years



NIH: Repays up to **\$50,000/year** of your **qualified educational** debt & covers resulting Federal taxes (39%)



Outcome: Increase in nation's stock of biomedical research scientists



5 Extramural NIH LRPs:

For individuals conducting research at non-profit Institutions

Clinical Research

- Patient-oriented research conducted with human subjects or materials of human origin (including cognitive phenomenon) on the causes and consequences of disease in humans
- Accepted and reviewed by all participating NIH ICs

Pediatric Research

- Research related to diseases or disorders in children
- Basic research allowed
- Accepted and reviewed by all participating NIH ICs

Health Disparities Research

- Research focusing on minority and other health disparity populations
- Basic, clinical, social and behavioral research allowed
- Now accepted and reviewed by all participating NIH ICs

Contraception & Infertility Research

- Research focusing on conditions impacting ability to conceive or bear children and provide new or improved methods of preventing pregnancy
- Applications reviewed solely by *Eunice Kennedy Shriver* NICHD

Clinical Research DB

- Same as Clinical Research LRP
- Available to clinical researchers from verifiable disadvantaged backgrounds
- Applications reviewed solely by NIMHD



Application Cycle Timeline

- September 1 – November 15: **Application Cycle Open**
- November 15: **Application, IBO and Colleague Deadline**
- Jan – May: **Application Review**
- May: **IC Initial Selections**
- May – July: **Financial Vetting and Verifications**
- Mid-July – August: **Final Funding Decisions/Applicant Notifications**
- November: **First Lender Payments**



Basic LRP Eligibility Criteria

Extramural



Doctoral Degree

M.D., Ph.D., or equivalent

***Exception: Contraception & Infertility Research LRP**



Research Funding

Domestic nonprofit, university, or government organization;

***NIH grant support NOT required**



Citizenship

U.S. Citizen or permanent resident



Educational Loan Debt

At least 20 percent of applicant's annual income



Research Time

At least 20 hours/week



National Institutes of Health
Office of Extramural Research

Important for FY 2019

- LRP award increased to a maximum of \$50,000/year (award amount depends on awardee debt level)
- Health Disparities Research LRP participation expanded to all NIH ICs participating in the LRPs
- **NIH eRA Commons ID** required to **submit** a completed LRP application (can start the application without one, however)
- **Same deadline** for online application and colleague and institutional support documentation
= **November 15th, 2019**



BEFORE You Start Your Application


The following are things that you can do now to be ahead of the curve:

- 1. Read LRP website and published notices** to determine which NIH LRP and IC is the right for you
- 2. Talk to an NIH LRP Program Officer/Liaison** at the NIH Institute and Center that you would like to review your application
- 3. Talk to your mentor, potential recommenders and your institutional business official** regarding your interest in applying for an LRP award
- 4. Contact your lender** to get specific loan information (including account numbers, amounts owed and promissory notes)
- 5. Make sure you have an eRA Commons ID**



Common Mistakes to Avoid

The following can weaken an applicant's competitiveness:

- Not contacting a program officer WELL BEFORE submitting application
- Weak or lukewarm recommendation letters ( kiss of death...)
- Questionable research commitment
- Mediocre research plan
- Rushed application (i.e., mistakes, misspellings)
- Inadequate research environment
- **Slim publication record**
 - ❑ If your record is slim, NEVER state, “I have a slim publication record, but”; Reviewers can tell by your CV; focus on identifying steps to improve
 - ❑ Include publication plans in your research plan (shows you're thinking about how to increase)
 - ❑ Also, your mentor can help here by discussing in their recommendation how they will help you in this area)



RESOURCES

LRP Website

Supporting Scientific Discovery

The NIH Loan Repayment Programs (LRPs) are a set of programs established by Congress and designed to recruit and retain highly qualified health professionals into biomedical or biobehavioral research careers. The escalating costs of advanced education and training in medicine and clinical specialties are forcing some scientists to abandon their research careers for higher-paying private industry or private practice careers.

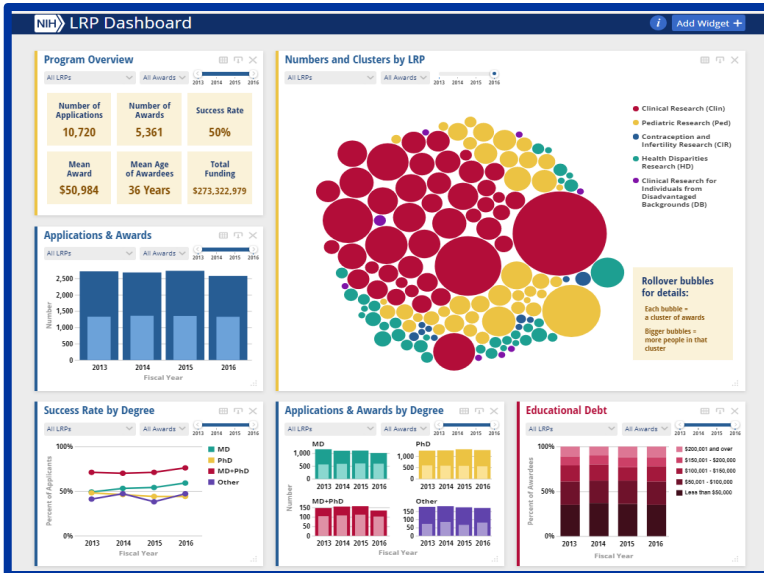
The LRPs counteract that financial pressure by repaying up to \$35,000 annually of a researcher's qualified educational debt in return for a commitment to engage in NIH mission-relevant research. Since tomorrow's medical breakthroughs will be made by investigators starting in their research careers today, the LRPs represent an important investment by NIH in the future of health discovery and the wellbeing of the Nation.

Application Periods and Documentation Deadlines

Extramural New & Renewal Awards	Intramural New Awards
Online Application Period Sep 1, 2016 - Dec 1, 2016 Colleague and Institutional Documentation Period Sep 1, 2016 - Dec 1, 2016 Contract and Certification Documentation Deadline Dec 31, 2016	Online Application Period Sep 1, 2016 - Apr 2, 2017 Colleague Documentation Period Sep 1, 2016 - Apr 17, 2017 Contract and Certification Documentation Deadline May 1, 2017

Repayment Calculator
Use our repayment calculator to get estimates on the amount of your award.

LRP Data Dashboard



Contact and Engage

Contact & Engage

Contact

LRP Information Center

Toll free: (866) 849-4047
 Fax: (866) 849-4046
 Email: lrp@nih.gov
 Mailing address: 6011 Executive Blvd, Suite 206, Bethesda, MD 20852

LRP IC Contact

- Extramural IC Mission & Priorities
- Extramural IC Contact List
- Intramural IC Coordinators Contact List

NIH Institutes	LRP Liaison
LRP Information Center	Information Center 866-849-4047 lrp@nih.gov
National Cancer Institute (NCI)	Dr. Mark Damico 240-276-5630 ncilrpinquiries@mail.nih.gov

National Cancer Institute (NCI)
 Institute Mission (Brief)

NCI coordinates the National Cancer Program which conducts and supports research training health information dissemination and other programs with respect to the cause diagnosis prevention and treatment of cancer rehabilitation from cancer and the continuing care of cancer patients and their families.

LRP Research Priorities

NCI accepts LRP applications from researchers with any biomedical doctoral degree who engage in qualifying cancer-focused clinical research or pediatric research. NCI does not give preference to applicants with one type of biomedical doctoral degree over another.

LRP Ambassador Program

What is the LRP Ambassador Program?

The LRP Ambassador Program is a network of former and current LRP awardees that promote the NIH LRPs within their local extramural scientific community.

What does an LRP Ambassador do?

LRP Ambassadors serve as a personalized link/connection between the Division of Loan Repayment (DLR) and potential applicants at their home institutions by identifying potential eligible applicants to the LRPs within their institutions and sharing information about the LRPs with them.

Since the Ambassador Program is being updated, all ambassadors must provide their current information to gain access to the Ambassador Resources on this page that are password-protected. Click on the "become an LRP Ambassador" button to connect to the sign-up form. Login information will be emailed to you following sign-up.

[Become an LRP Ambassador](#) [Current Ambassador Login](#)

LRP AMBASSADOR

LEARN ABOUT THE AMBASSADOR NETWORK
www.nih.gov

[Contact Us](#)
[Find us on Facebook](#)

LRP Ambassador Site

Find an LRP Ambassador

If you are an LRP applicant, you can view the Ambassador Directory to find an Ambassador at an institution near you.

If you are an Ambassador, you can use the Ambassador Directory to find other Ambassadors at an institution near you.



[View the LRP Ambassador Directory](#)

LRP Ambassador Resources

LRP Ambassadors can access resources here to better understand their role and to effectively conduct outreach to potential applicants. Resources include a pocket that provides an overview of the LRP Ambassador Program and a wide array of tools, a presentation about the LRPs, and information about how to order print materials. This section of the page is password-protected for Ambassadors only.

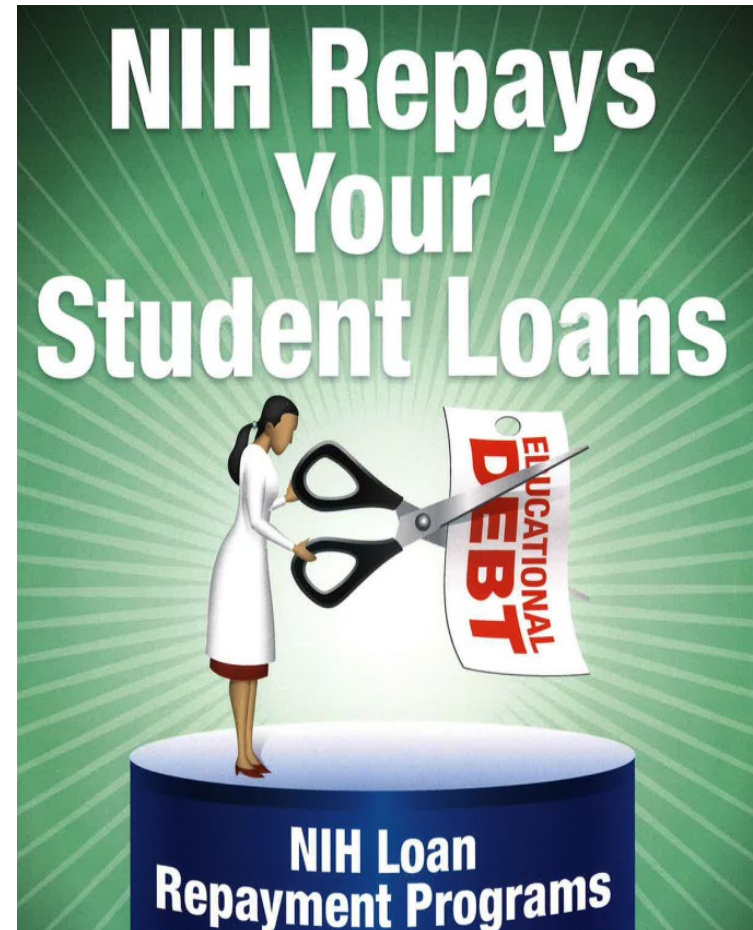
NIH National Institutes of Health
 Office of Extramural Research

Summary

- 5 Extramural LRPs
- All NIH ICs now participating in the HDR-LRP
- Educational loan repayment maximum up to **\$100K over 2 yrs**
 - Depending on debt level
- Coverage of most Federal taxes resulting from the NIH LRP
- 2 year initial contracts
 - 1 or 2 year competitive renewals
- Approximately 1,500 researchers funded yearly
- ~50% application success rate overall

****Applications Deadline - Nov 15, 2019**

****Apply for your eRA Commons ID!**



Contact LRP

Website: www.lrp.nih.gov

Phone: 866-849-4047 (9am-5pm, EST)

Email Inquiries: lrp@nih.gov

 Twitter: [@NIH_LRP](https://twitter.com/NIH_LRP)

 Facebook: www.facebook.com/nihlrp

